



**S3M Security**  
Easy Way to Connect

# EdgeBOX

powered by **S3M Security**  
Easy Way to Connect



**TECHNICAL INFORMATION**



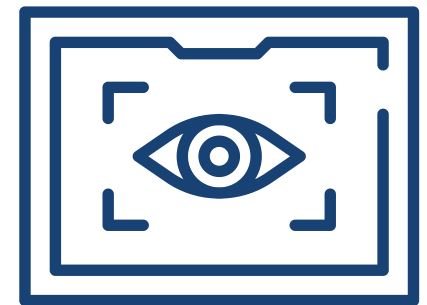
**S3M Security**  
Easy Way to Connect

EdgeBoX

• Managed Service Security Provider NAC

## Overview

The EdgeBoX is the first MSSP network access control approach that provides granular control over who has access to your network and what they can do once they're connected. This solution is designed for Managed Security Service Providers (MSSPs) who need to secure their customers' networks and provide compliance reporting.





# EDGEBOX CAPABILITIES

## Server Management

1. Local Admin User Database
2. LDAP/Active Directory User Access Capability
3. Role-Based Access
4. NTP Support
5. Local Firewall
6. EdgeBoX-to-Console-to-EdgeBoX VPN Access
7. Multi-Tenant Management Support
8. Event Log Support
9. Syslog Support (External Log Server)
10. SMTP Gateway Integration
11. SMS Gateway Integration
12. Customizable Language Pack
13. Upgrade, Downgrade, Shutdown and Reboot Server
14. API Integration

## EdgeBoX Management

### *EdgeBoX Management*

- a. Shutdown
- b. Reboot
- c. Network Settings
- d. NTP Management
- e. EdgeBoX System Upgrade
- f. EdgeBoX Domain Controller Join
- g. EdgeBoX API Integration
- h. EdgeBoX-to-Console Settings
- i. EdgeBoX License Settings
- j. EdgeBoX Service Statements
- k. EdgeBoX File Management

### *EdgeBoX Auth Management*

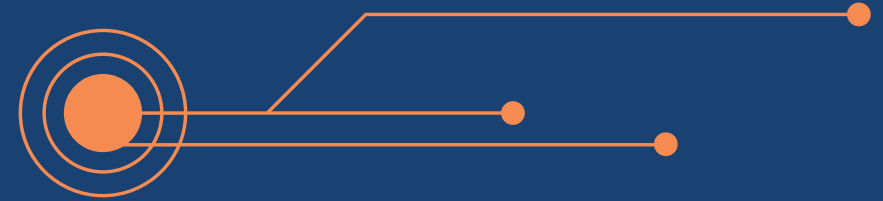
- a. Authentication Service Regulation
- b. Authorization Service Regulation
- c. Accounting Service Regulation
- d. Network Single-Sign-On
- e. Template Service Submission
- f. Local Authentication Source Settings
- g. Use of Role and Group Architecture
- h. Radius Attribute Support for Multi-Vendors (vendor agnostic)

## *EdgeBoX Endpoint Protector Management*

- a. Agent or Agentless EPP Management
- b. Device Network Discovery Management
- c. Limited Device Management
- d. API Integration
- e. Health Check Configuration (MAC, Linux, Windows)
- f. Regedit Control
- g. Antivirus Control
- h. Domain Control
- i. Application Control
- j. Customizable Agentless Command Control
- k. User Device Force Settings
- l. Application Install/Uninstall Feature Configuration

## *EdgeBoX Logs and Reports System*

- a. Endpoint Recording System
- b. EdgeBoX System Logs (Edge Device Logs)
- c. System Logs
- d. Registration Redirect System
- e. Authentication Records
- f. Accounting Records
- g. Hotspot / Guest Records
- h. Event Logs for EdgeBox and Console



## *EdgeBoX Tacacs+ Management*

- a. Global Settings
- b. Service Settings
- c. Command Settings
- d. Authorization Settings

## *EdgeBoX Hotspot Management*

- a. Guest User Management
- b. Guest Services Management
- c. Template Management
- d. Guest Site Style Management
- e. Guest Form Management
- f. User Agreement Management

# HARDWARE REQUIREMENTS

## *EdgeBoX Console*

### *1-100 EdgeBoX Management*

- 8 GB Memory
- 8 vCPU
- 1 Gbps Ethernet
- 200 GB HDD (IOP rating for a 40-60 read/write 350)
- 1 Static IP Address

### *100-1000 EdgeBoX Management*

- 16 GB Memory
- 12 vCPU
- 1 Gbps Ethernet
- 200 GB HDD (IOP rating for a 40-60 read/write 350)
- 1 Static IP Address

### *1000-5000 EdgeBoX Management*

- 32 GB Memory
- 24 vCPU
- 10 Gbps Ethernet
- 1 TB HDD (SSD)
- 1 Static IP Address

## *EdgeBoX*

### *1-100 Client*

- 2 GB Memory
- 1 vCPU
- 1 Gbps Ethernet
- 50 GB HDD (IOP rating for a 40-60 read/write 350 )
- 1 Static IP Address

### *100-2500 Client*

- 4 GB Memory
- 4 vCPU
- 1 Gbps Ethernet
- 50 GB HDD (IOP rating for a 40-60 read/write 350 )
- 1 Static IP Address

### *2500-5000 Client*

- 8 GB Memory
- 8 vCPU
- 10 Gbps Ethernet
- 200 GB HDD (IOP rating for a 40-60 read/write 350 )
- 1 Static IP Address

# FIREWALL REQUIREMENTS

## *EdgeBoX Console*

*To Outside*

Permit all

*To Inbound Traffic*

TCP 443

TCP 80

UDP/TCP 4500

UDP/TCP 500

## *EdgeBoX*

*To Outside*

Permit all

*To Inbound Traffic (Internet)*

UDP/TCP 4500

UDP/TCP 500

*To Inbound Traffic (Local Network)*

TCP 8443

TCP 21

UDP 69

TCP 22

DHCP

DNS

ICMP

TCP/UDP 1812

TCP/UDP 1813

TCP/UDP 3799

TCP/UDP SNMP (161,162,163)